

# Summer Linen Dress

## Printable Sewing Pattern

A-Line / Shift Silhouette | 3 Sizes | Beginner Friendly

### BEFORE PRINTING

1. Set printer to ACTUAL SIZE or 100% scale. Do NOT select Fit to Page or Shrink to Fit.
2. Print page 2 first and measure the 2"x2" test square. It must measure exactly 2 inches.
3. If the test square is wrong, adjust printer settings until it measures correctly.
4. Print remaining pages at the same confirmed settings.

### Size Chart

Measurement	Size S	Size M	Size L
Full Bust	32"-34"	36"-38"	40"-42"
High Bust	30"-32"	34"-36"	38"-40"
Waist	26"-28"	30"-32"	34"-36"
Hip	34"-36"	38"-40"	42"-44"
Finished Length	approx 42"	approx 43"	approx 44"
Fabric (54" wide)	2.25 yds	2.5 yds	3 yds
Fabric (44" wide)	2.75 yds	3 yds	3.5 yds

Select size by FULL BUST. If full bust is more than 2" larger than high bust, cut by high bust and add a full bust adjustment.

5/8" seam allowance included on all seams. 1.5" hem allowance included.

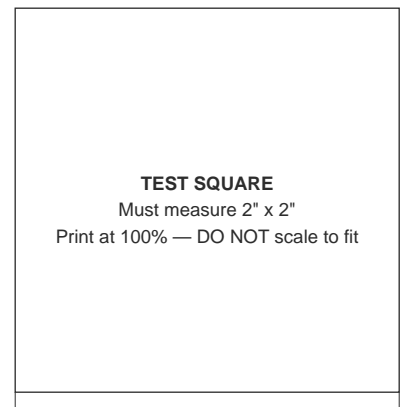
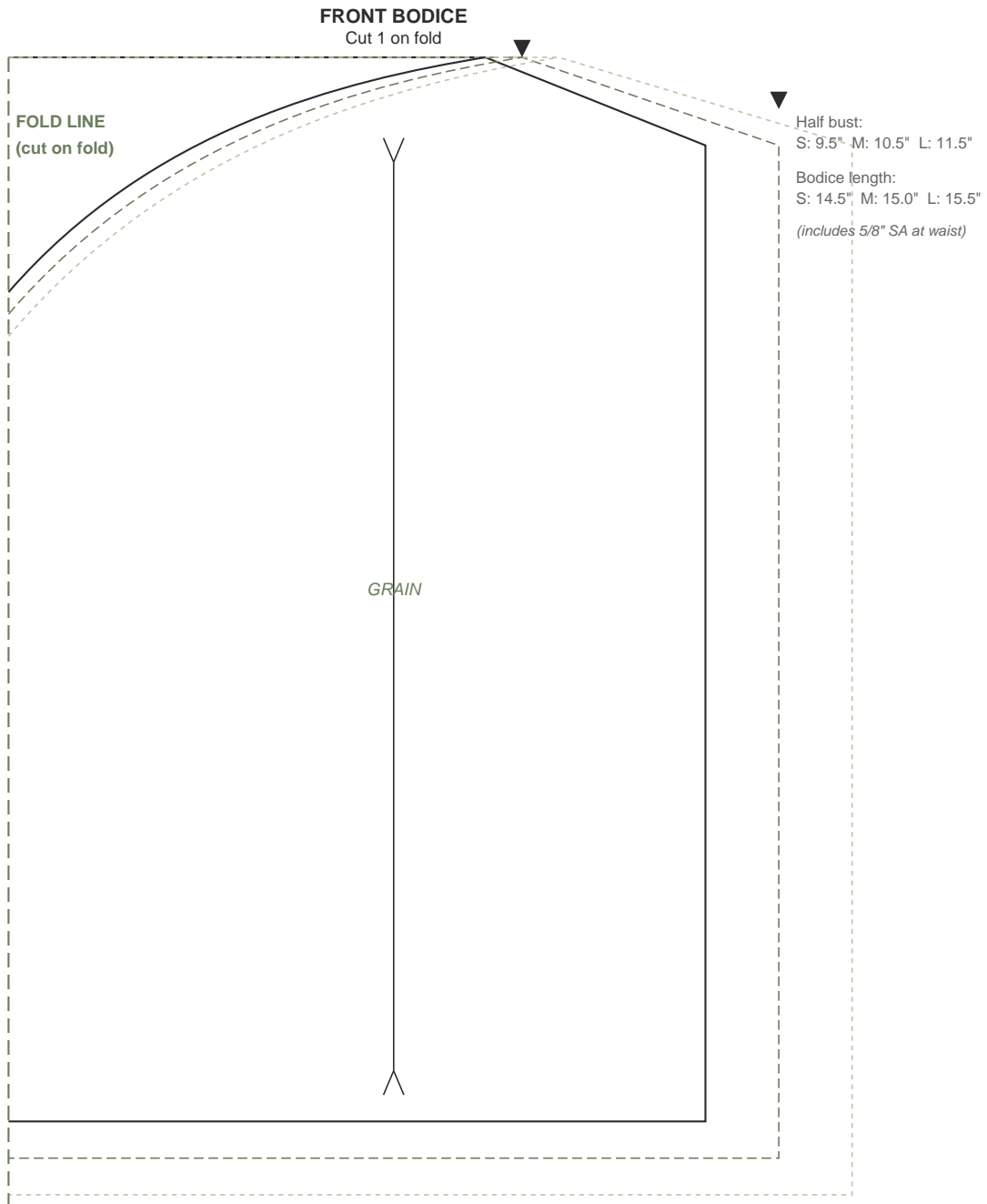
### Size key on pattern pieces:

- Size S  
 - - - - - Size M  
 ······· Size L

### Pattern pieces included:

- Piece 1 — Front Bodice (cut 1 on fold) — pages 2-3  
 Piece 2 — Back Bodice (cut 1 on fold) — pages 4-5  
 Piece 3 — Neckline Facing (cut 1 on fold) — page 6  
 Piece 4 — Skirt Front and Back (cut 2 on fold) — pages 7-8

**SCHEMATIC VIEW** — annotated to draft at full size



2 inches

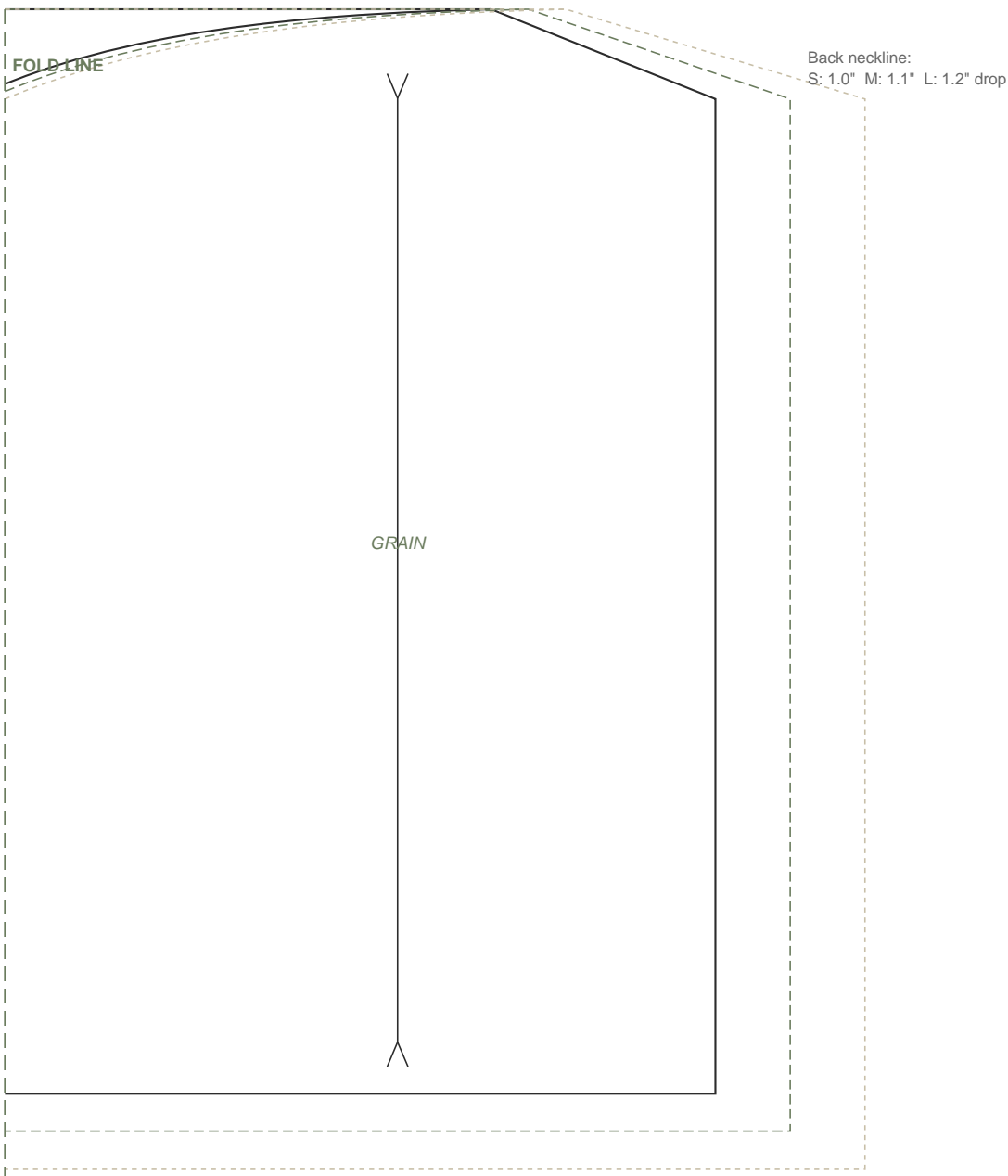
5/8" seam allowance included on all edges



**SCHEMATIC VIEW** — annotated to draft at full size

**BACK BODICE**

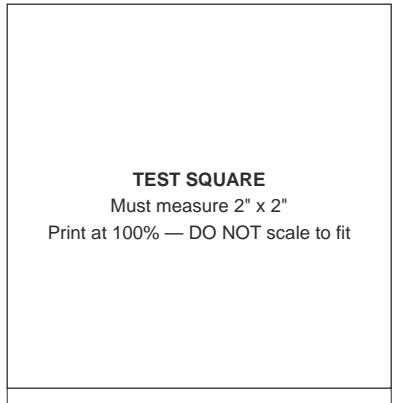
Cut 1 on fold



Back neckline:  
S: 1.0" M: 1.1" L: 1.2" drop

GRAIN

FOLD LINE



**TEST SQUARE**

Must measure 2" x 2"

Print at 100% — DO NOT scale to fit

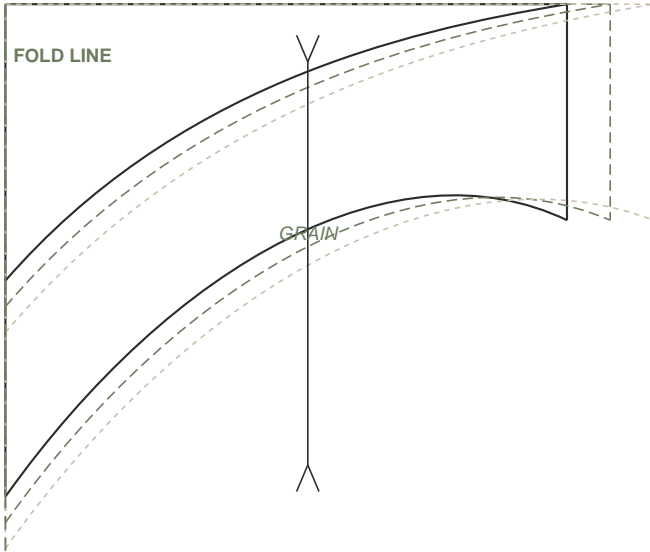
2 inches

5/8" seam allowance included on all edges

**SCHEMATIC VIEW** — annotated to draft at full size

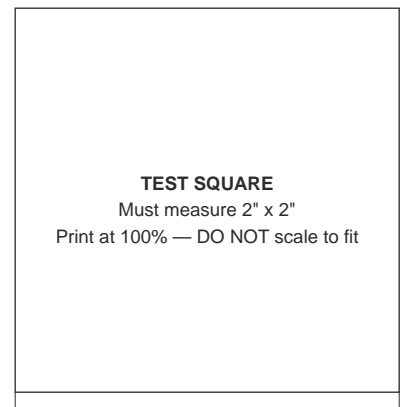
**NECKLINE FACING**

Cut 1 on fold



Facing depth: 2.5" (includes 5/8" SA at neckline and lower edge)

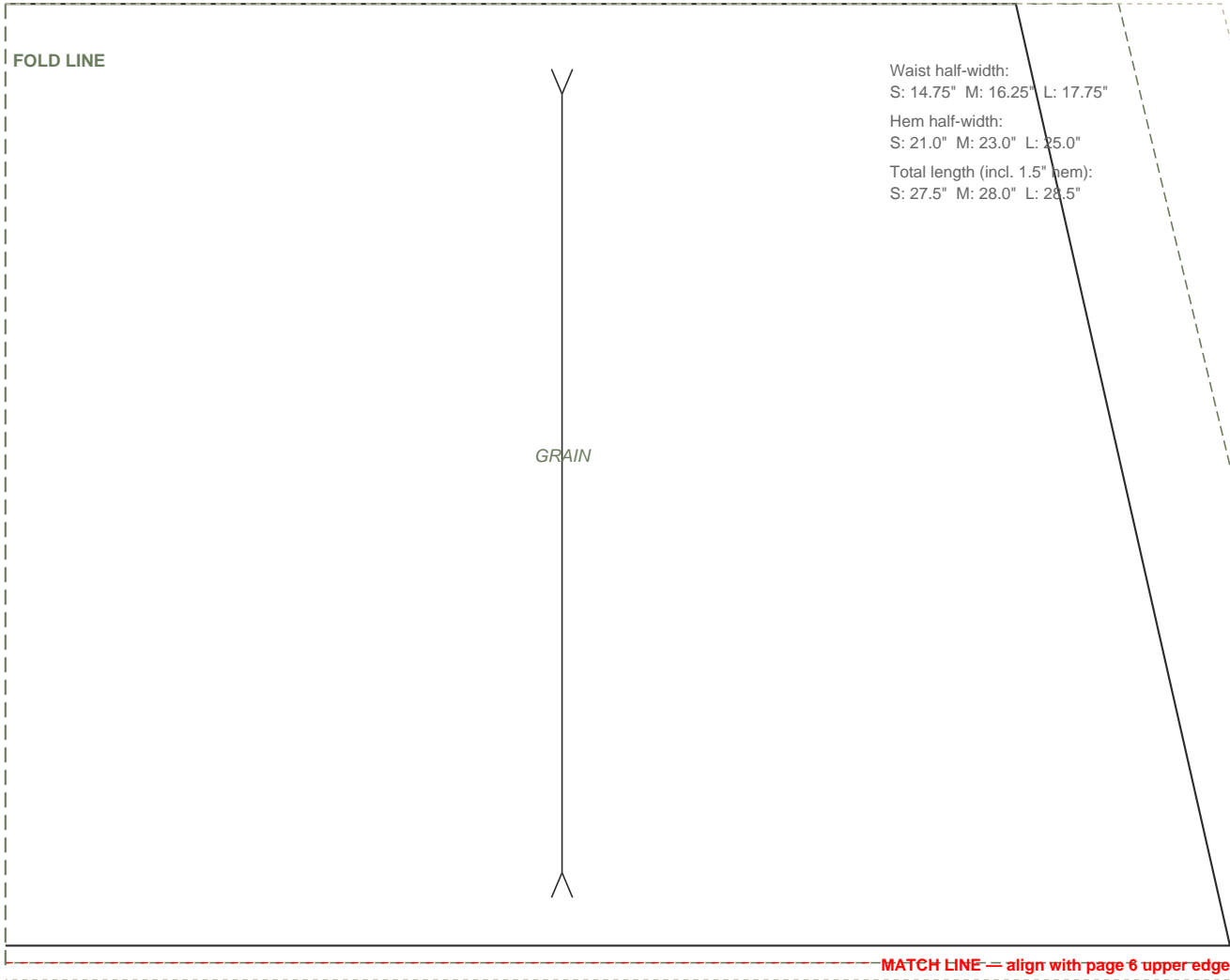
5/8" seam allowance included on all edges



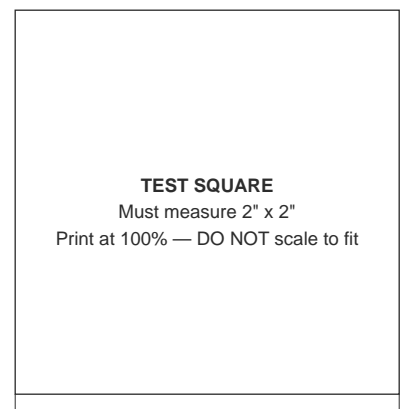
2 inches

**SCHEMATIC VIEW** — annotated to draft at full size

**SKIRT FRONT / BACK (upper)**  
Cut 2 on fold (front and back identical)



5/8" seam allowance included on all edges



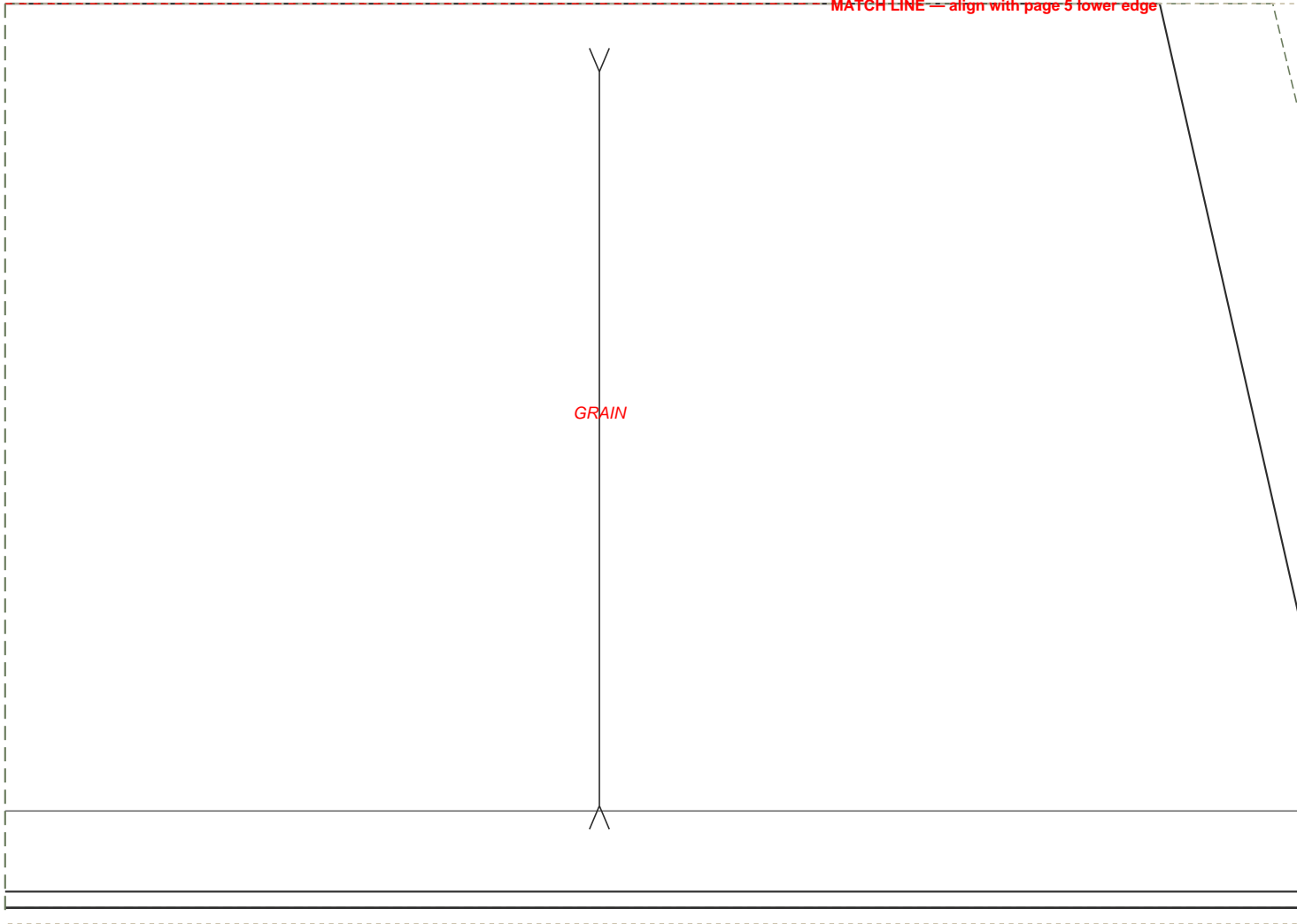
**SCHEMATIC VIEW** — annotated to draft at full size

**SKIRT FRONT / BACK (lower)**

Cut 2 on fold

**MATCH LINE** — align with page 5 lower edge

**GRAIN**



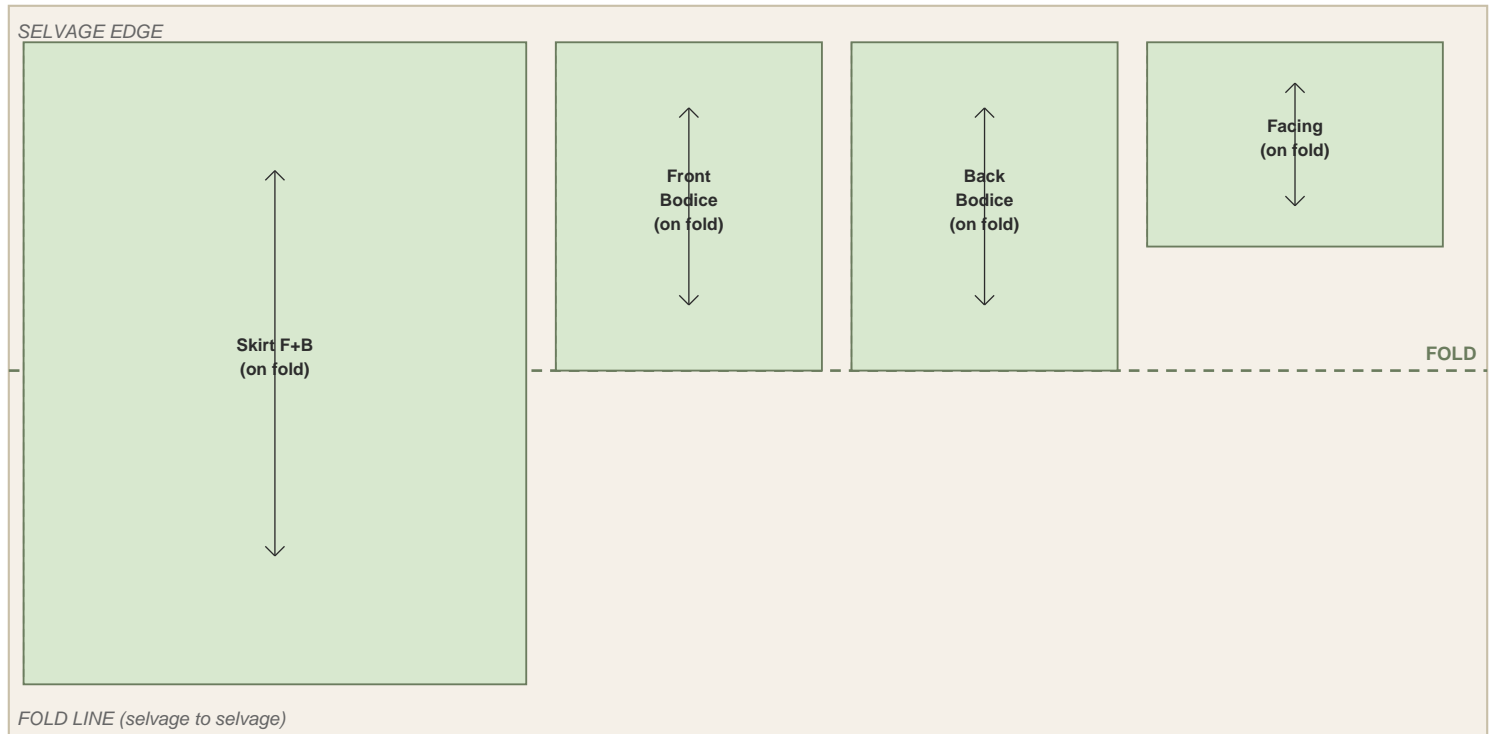
5/8" seam allowance included on all edges

**TEST SQUARE**

Must measure 2" x 2"

Print at 100% — DO NOT scale to fit

2 inches

**Cutting Layout: 54-Inch Fabric, Folded Selvage to Selvage****Notes:**

- All pieces are placed with grainline arrow parallel to the selvage edge.
- Pieces shown on fold: position left edge of piece exactly on the fold line. Do not cut the fold.
- For 44-inch fabric: skirt pieces must be cut in two halves and seamed at center front/back.
- Cut front and back skirt separately even though pattern piece is identical.
- Always verify grainline measurement at both ends of arrow before cutting.

## Construction Sequence

### Step 1: Cut pattern pieces on grain

1 Fold selvage to selvage. Measure grainline at both ends. Must match within 1/8". Use weights.

---

### Step 2: Staystitch curved edges immediately

2 Stitch length 2.0mm. Stitch just inside seam allowance. Neckline, armholes, curved hem. Takes 2 minutes.

---

### Step 3: Finish all seam allowances before assembly

3 Serger, zigzag, or French seam. Choose one method. Use on every enclosed seam allowance.

---

### Step 4: Sew side seams and press

4 5/8" seam allowance. Press open before crossing with another seam. Use tailor's ham at hip.

---

### Step 5: Attach neckline facing and understitch

5 Trim to 1/4". Clip curves. Understitch through facing and seam allowance before turning. Cannot add after turning.

---

### Step 6: Hang dress, mark hem, press

6 Hang 1 hour before marking. Turn twice and press. Topstitch or slip-stitch. Press from right side under pressing cloth.

---

#### Press every seam before the next seam crosses it.

Stitch length 2.5mm for construction seams. 2.0mm for staystitching.

Use pressing cloth on linen to prevent shine. Iron temperature: medium-high with steam.

Fresh 80/12 needle before starting. Rethread from scratch if stitches skip.

# You have everything you need.

Pre-wash your linen. Thread your machine. Cut on grain.

---

### Pattern assembly order:

Pages 2-3: Front and Back Bodice

Page 4: Neckline Facing

Pages 5-6: Skirt Front/Back — match red registration lines across pages

Page 7: Cutting layout guide (reference only, do not cut)

Page 8: Construction quick reference (keep at your machine)

---

Share your make: tag @sewingdotcom

This pattern is free for personal use. Do not redistribute or sell.

[EDITOR: INSERT copyright line, year, and canonical URL]