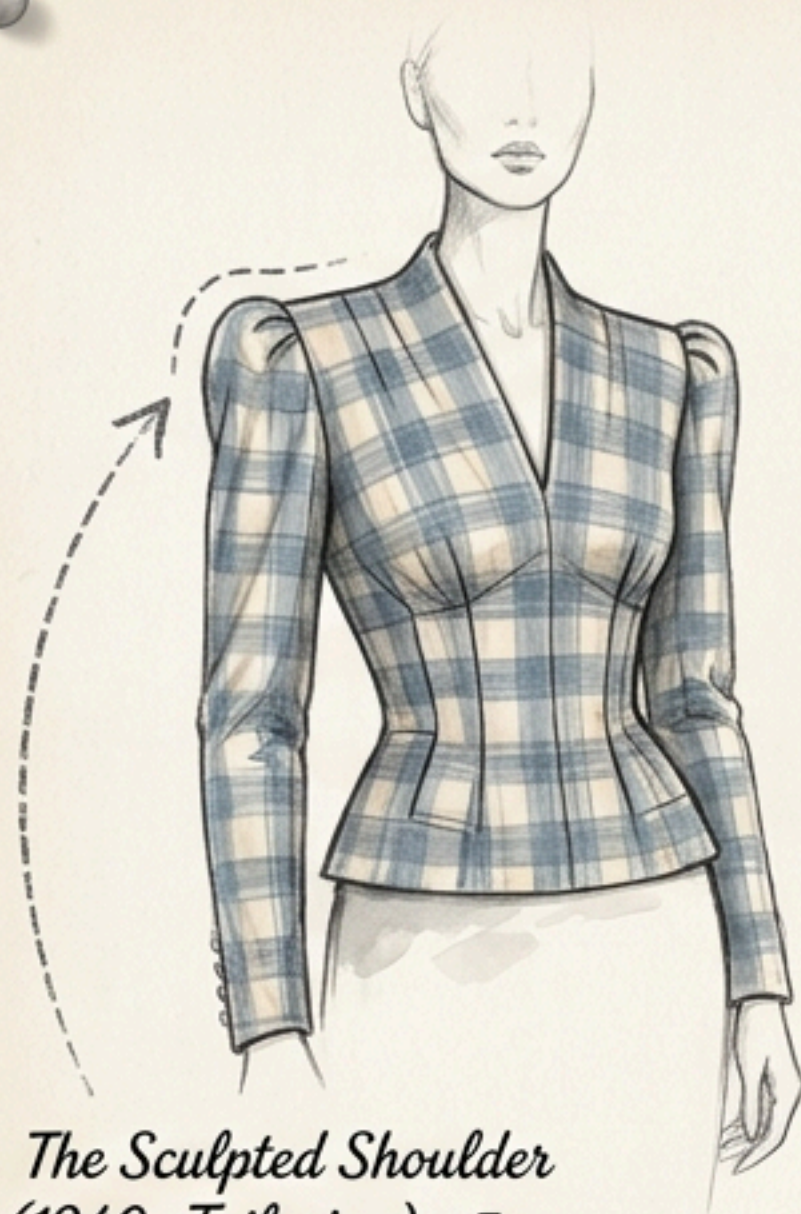




The Master's Guide to Vintage-Inspired Sewing: Spring 2026

Silhouettes, Fit Blueprints,
and Authentic Construction

Spring 2026 demands a return to architectural structure.



*The Sculpted Shoulder
(1940s Tailoring) - Focus
on shoulder pad placement
and sleeve cap ease.*

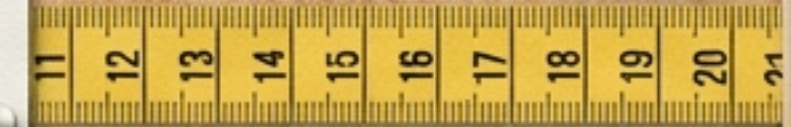


*The Full Skirt & Bodice
(1950s Formal)
- Focus on cinched
waists and underlined
structure.*



*The Lace Overlay
(1960s Cocktail)
- Focus on stable
woven underlinings
beneath sheer
surfaces.*

Modern sewing relies on stretch and ease. Vintage silhouettes require structural logic: precise darting, firm wovens, and hidden architecture.



The Vintage Difference Matrix

	Original Vintage Pattern	Big 4 Reproduction	Indie Reproduction
Sizing:	Pre-1970 full-bust based	Era-specific modern	Modern multi-size (Cup-inclusive)
Instruction:	Assumes advanced competence	Updated (some complex steps removed)	Detailed, technique-forward
Ease:	Era-specific (less hip ease)	Updated to modern standards	Varies heavily by designer

*The number on a vintage envelope does not match a modern body.
Treating these pattern types as interchangeable
is where most reproduction projects fail.*

Start with your skill level, not the illustration.

Intermediate-Advanced: The Structured Bodice

(Charm Lamour / Etoile). Requires underlining, boning channels, and hand-finishing.



Half the work of vintage sewing is done mentally before the first stitch. Sequence your projects by their construction demands.

Intermediate: Soft Tailoring

(Butterick B6582 / 5882). Gathered shoulders and sweetheart facings. Requires muslins and understitching.



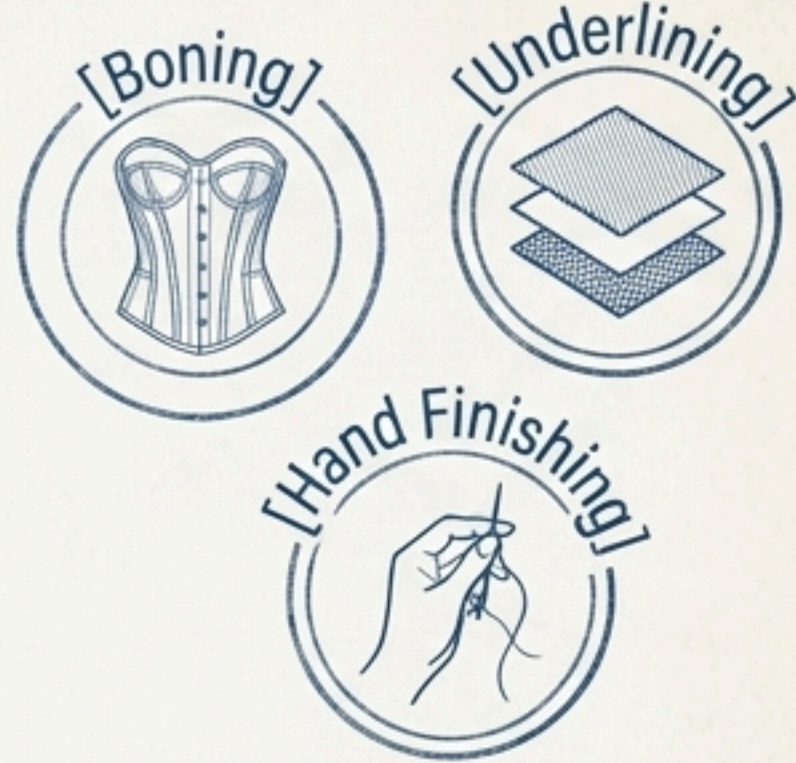
Beginner-Intermediate: The Wrap Silhouette

(Vogue V1864). Self-adjusting waistline, no boning required.



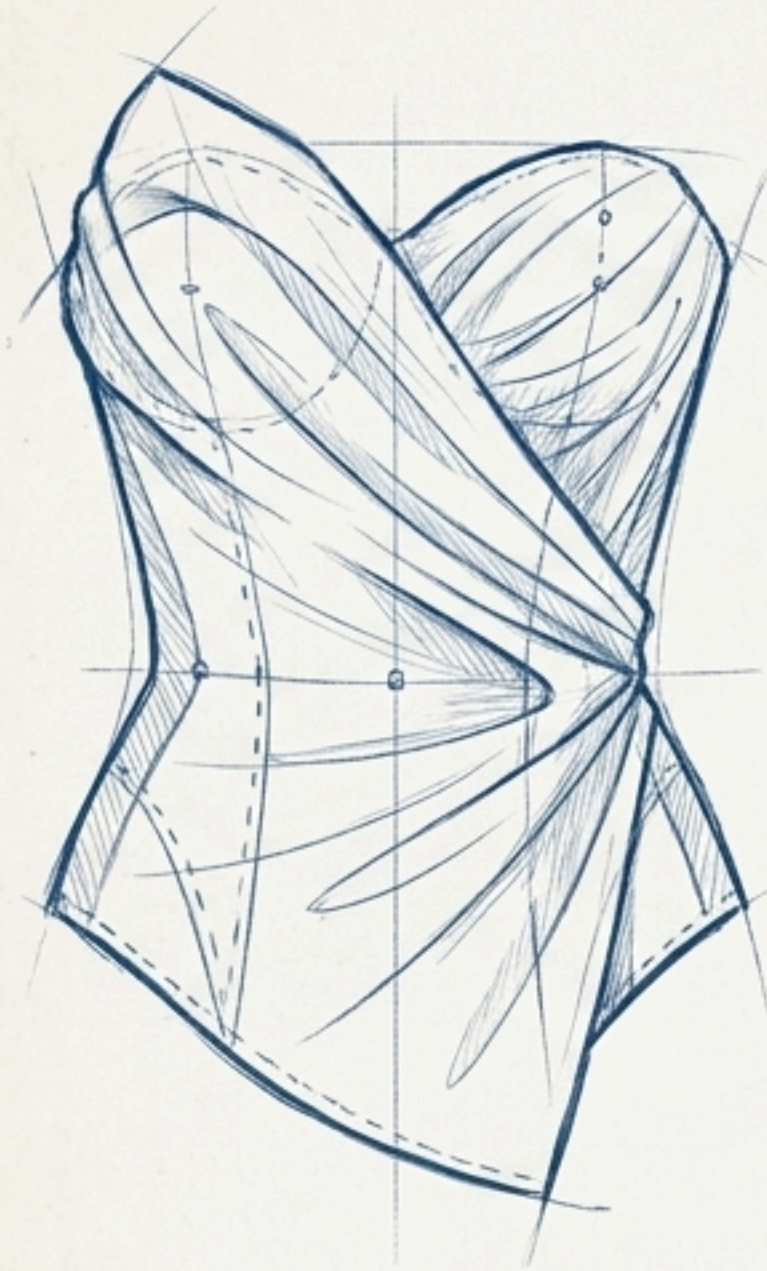
The Structured Bodice demands the highest level of technical execution.

Charm Patterns Lamour Dress



Sizes 2-34 (A-H cup grading).
The definitive 1950s
formal silhouette.
Heavily engineered with
boning and underlining.

Etoile Bodice (2026)



2026 Met Gala-inspired
sculptural presentation.
Requires firm underlining
(muslin for opaques,
visible for sheers).

Underlining on these patterns is a listed construction requirement, not an optional step.

Soft tailoring and wraps provide accessible entry points to vintage ease.



Vogue V1864 (The Wrap)

The strongest entry-point for vintage sewing. The 1953 wrap construction self-adjusts at the waistline, removing FBA complexity from the first attempt.



Butterick B6582 & 5882
(Soft Tailoring)

Delivers the sculpted shoulder effect via gathers rather than boning.

Big 4 Sizing Alert!

B6582 runs large in the bodice; 5882 runs small at the bust.

A muslin is mandatory before cutting fashion fabric.

The Master Toolkit for Structured Wovens

Pressing



Tailor's ham (mandatory for curved bodice seams), sleeve roll (for set-in sleeves), wooden clapper (for sharp edges).

Cutting



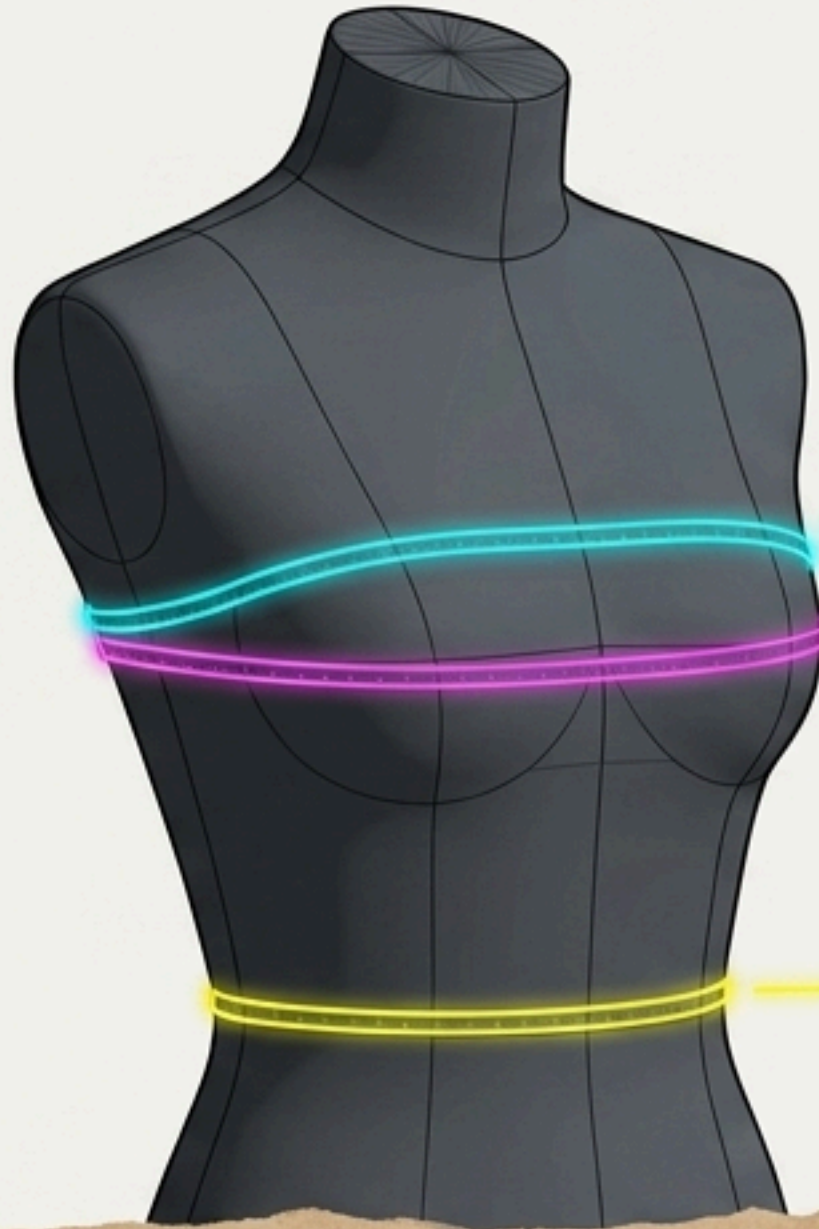
Heavy pattern weights (6+ minimum) and Swedish tracing paper. Note: Pins distort grain on tissue and lightweight wovens.

Construction



1.5 yards of neutral cotton broadcloth (for muslins), Size 10 Sharps (for hand-sewing), spiral steel or rigilene boning.

The 3-Measurement Blueprint



High Bust: Measured under the arms, above the bust. This is your Size Selector.

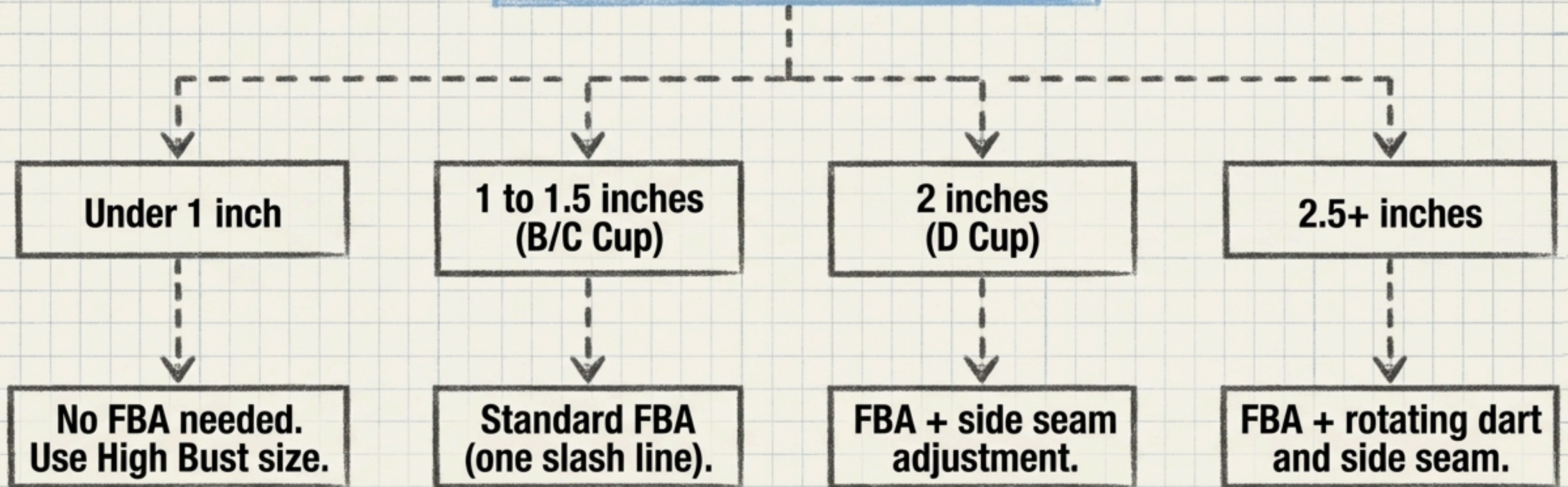
Full Bust: Measured across the fullest point, parallel to the floor. This is your FBA Calculator.

Waist: Measured at the natural bend. This is your Ease Check.

**Vintage sizing never matched real bodies.
Select your size by High Bust, not the envelope number.**

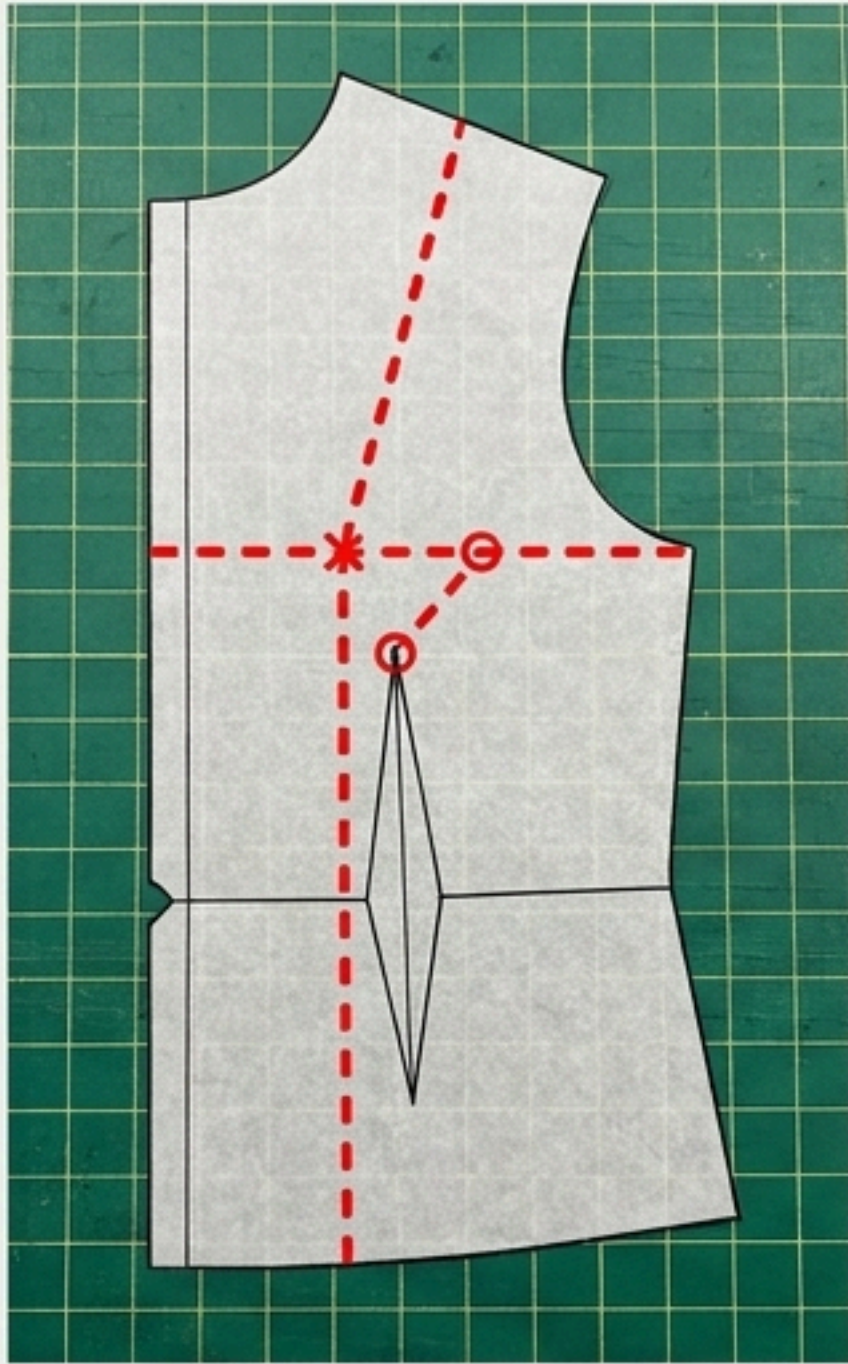
The Fit Diagnostic: Do you need an FBA?

**Full Bust minus High Bust
=
Cup Difference**

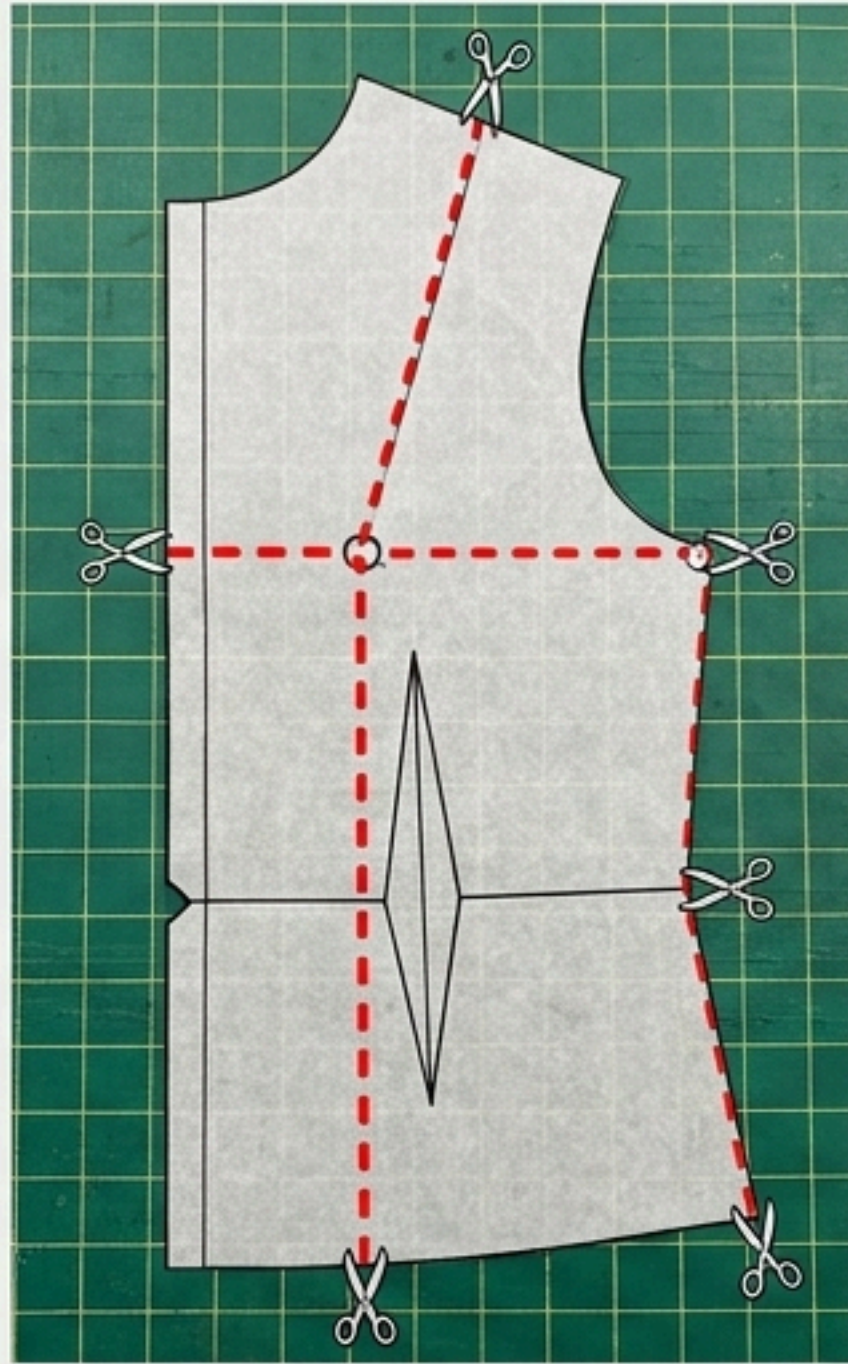


Key Insight: An FBA is not an advanced alteration. For anyone above a B cup, it is the default starting point.

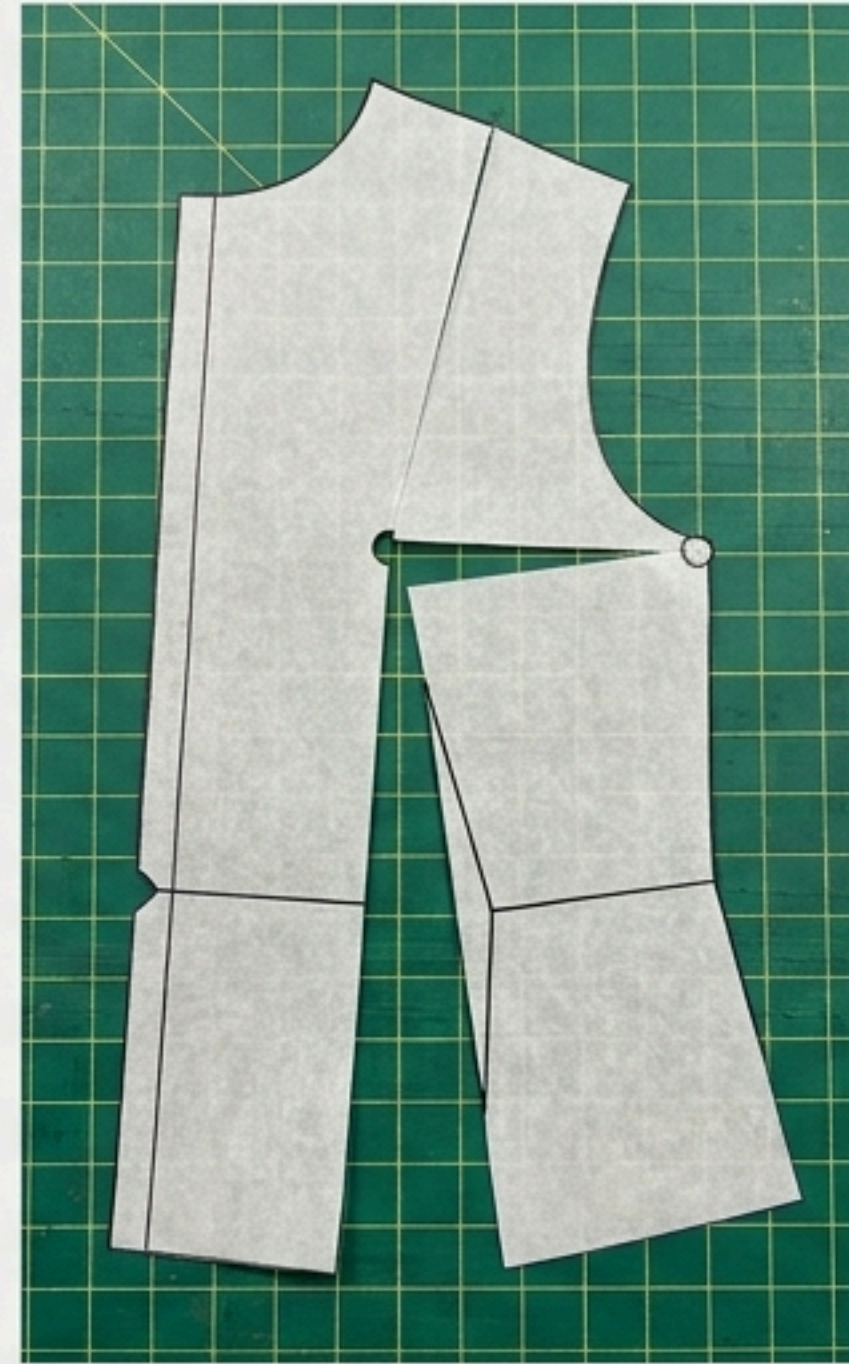
The Anatomy of a Full Bust Adjustment (Slash & Spread)



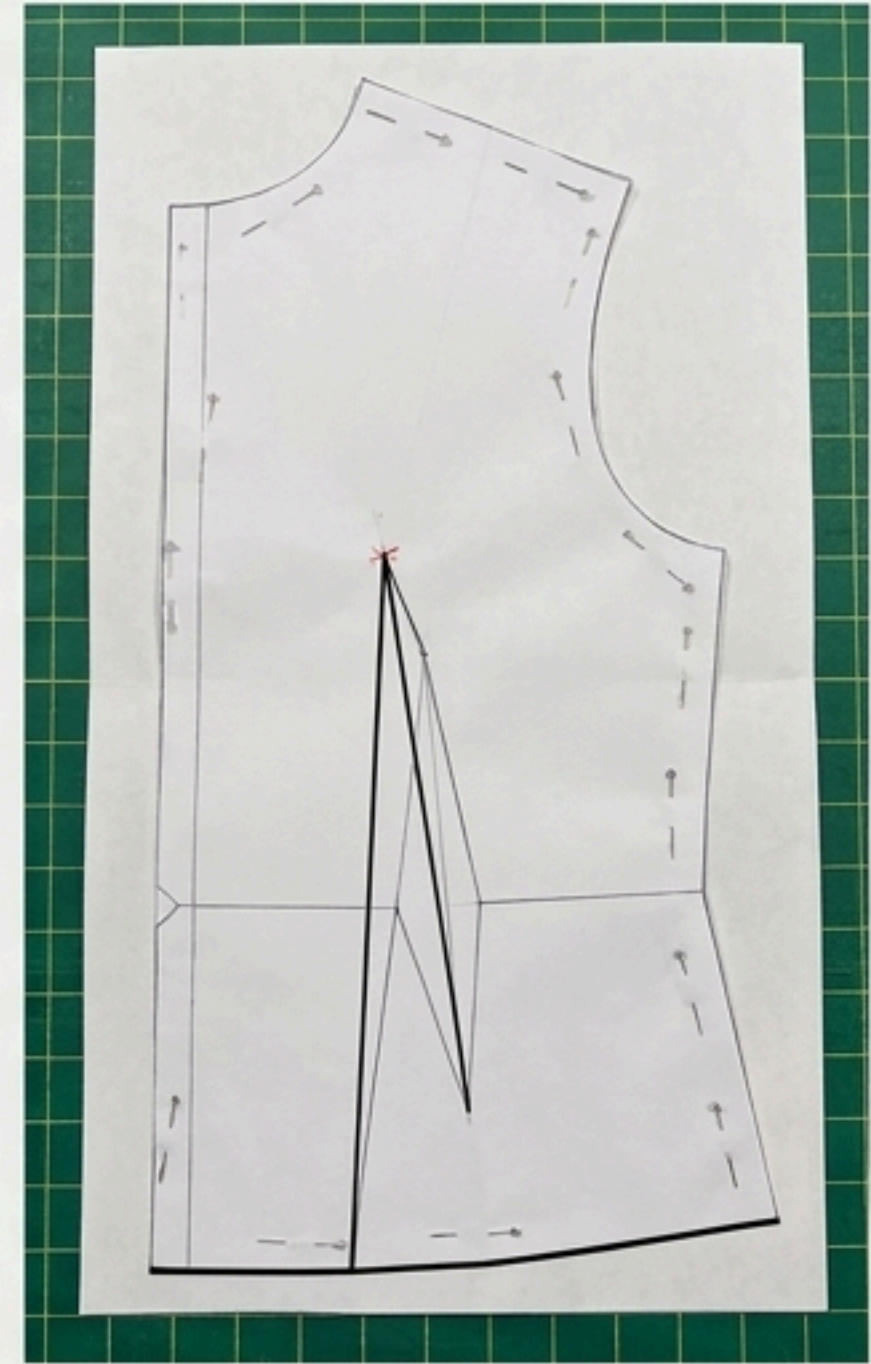
Step 1: Draw: Mark vertical slash line (bust point to hem), side slash (bust point to side seam), and pivot line (dart to bust point).



Step 2: Cut & Hinge: Cut along lines, stopping 1mm from the edges to create paper hinges.

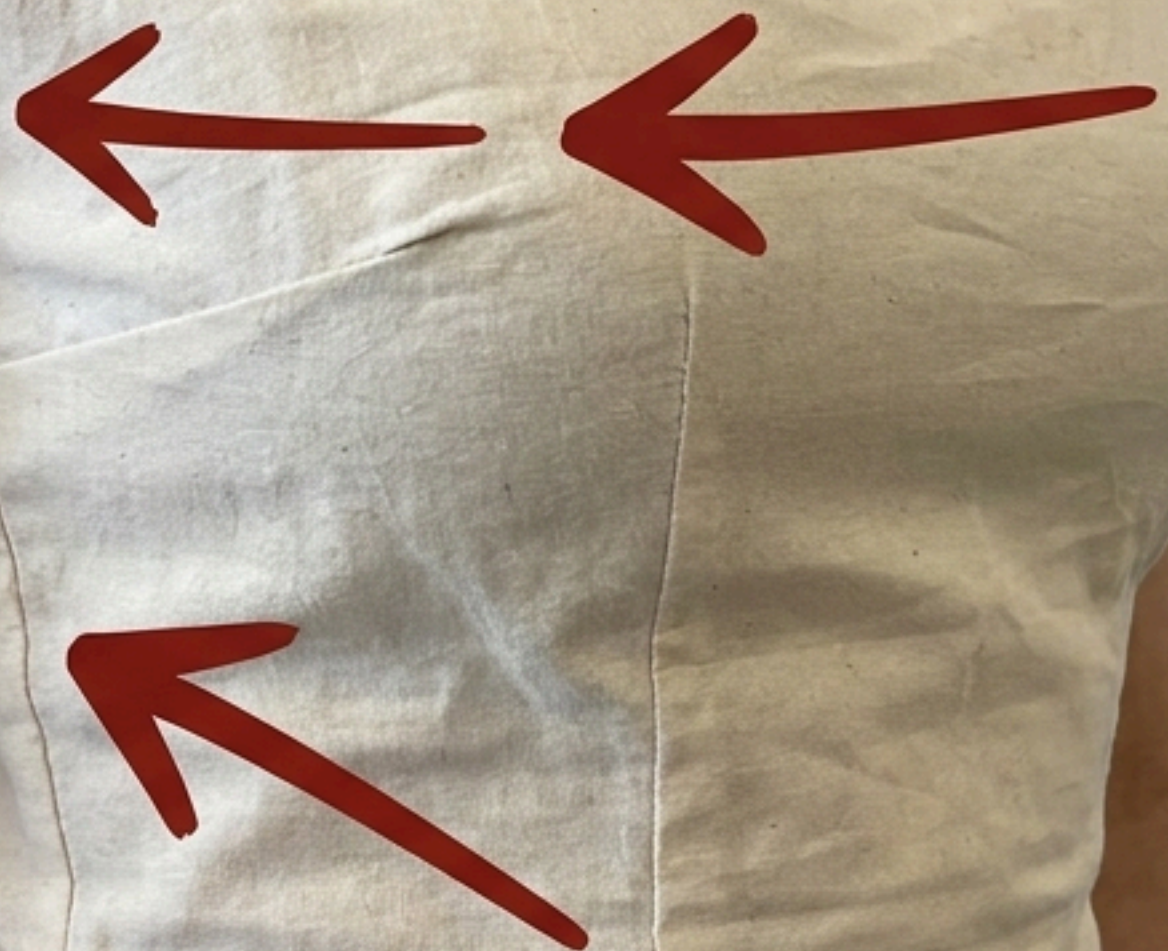


Step 3: Spread: Open the vertical slash exactly by the amount of your Cup Difference.



Step 4: True Up: Pin to new paper. Redraw dart legs to the original bust point and true the hemline.

The Muslin Mandate

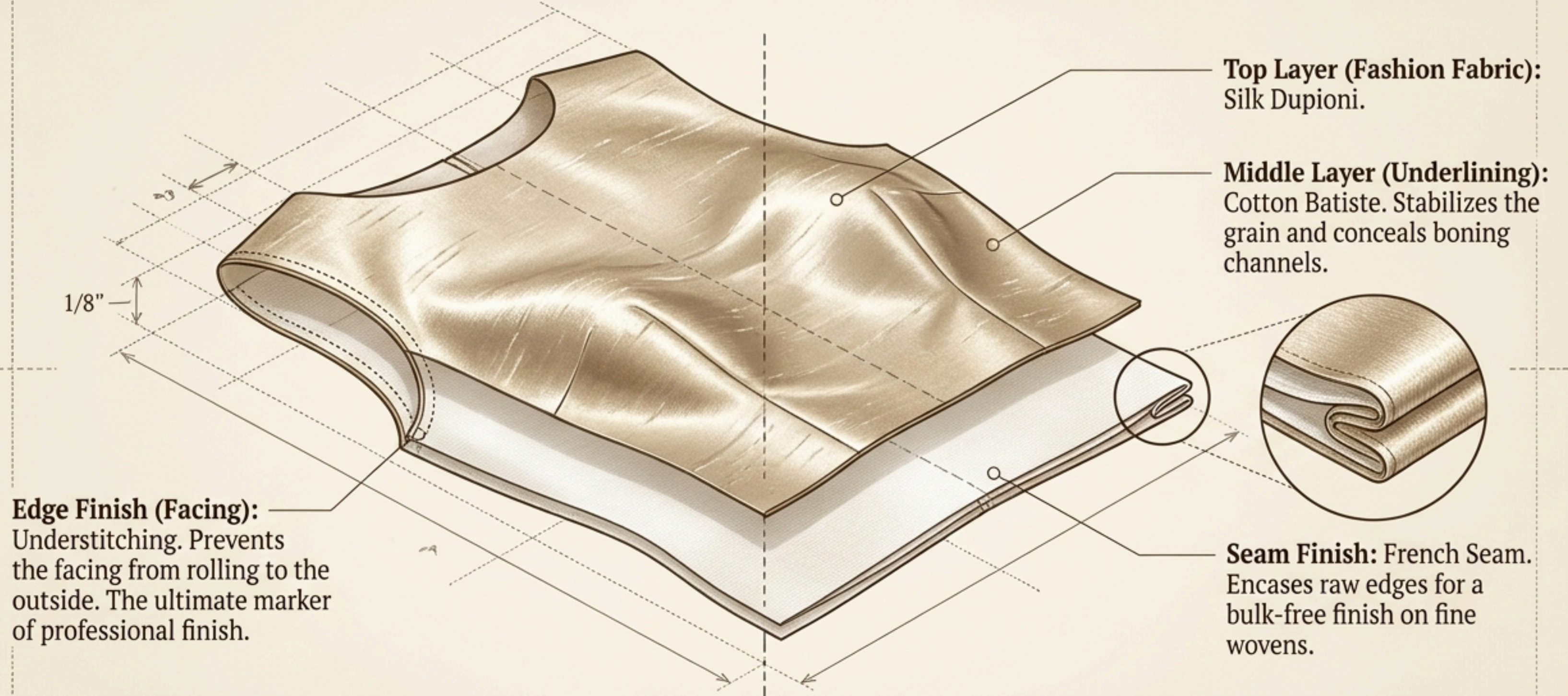


Fit on the body, not on the dress form.
Vintage ease was built around
structured 1950s undergarments,
not modern foundations.

- Check for horizontal bust drag lines.
- Check if the side seam pulls forward.
- Check for armhole gaping.

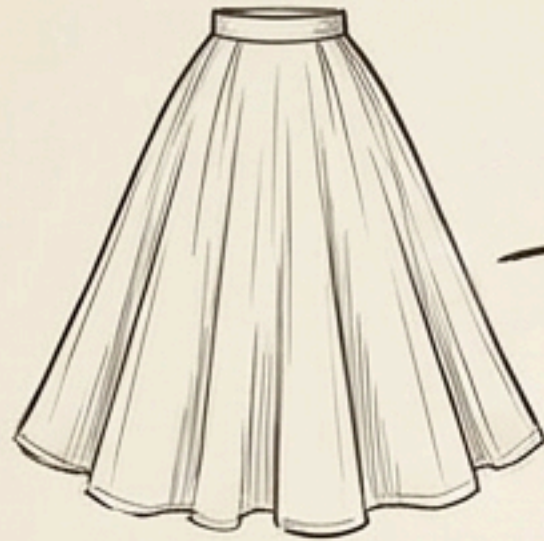
*Mark all corrections in
contrast chalk before
transferring back to the
paper pattern.*

Anatomy of Authenticity: The Hidden Architecture

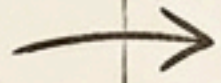


“They didn’t avoid more difficult steps; they included all necessary steps to achieve an immaculate finished garment.”

The Fabric-to-Silhouette Matchmaker



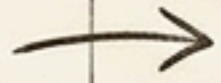
Full Circle Skirt



Cotton Sateen / Linen
(Requires hem weight).



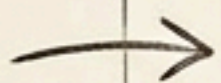
Tailored Shoulder Blouse



Silk Dupioni / Charmeuse / Taffeta
(Requires underlining compatibility).



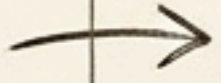
Tailored Shoulder Blouse



Linen Suiting
(Requires self-supporting structure).



Wrap Dress



Matte Crepe / Cotton Lawn
(Requires fluid drape).

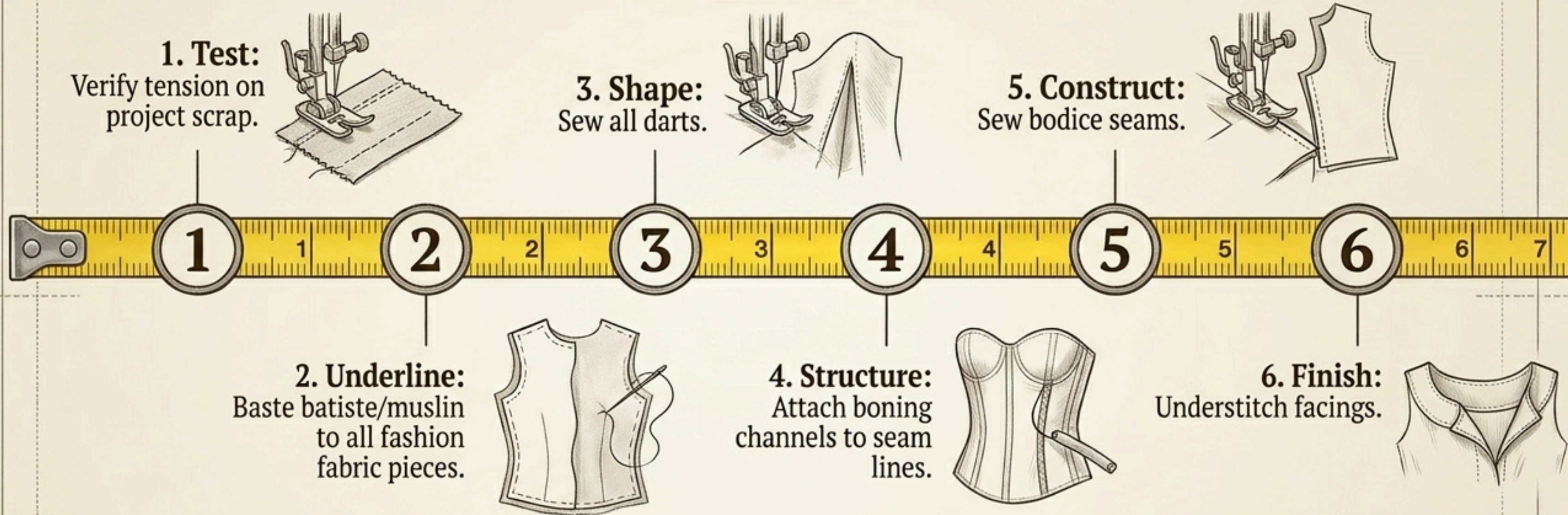
Charcoal Grey

Structural logic does not transfer. Do not use stretch fabrics, jersey, or lightweight synthetics for structured vintage patterns.



Spring 2026
Palette relies on
Cloud Dancer
(off-white),
soft blues, and
warm yellows.

The Immutable Construction Sequence (Structured Bodices)






The Golden Rule: *Press every seam before crossing it with another seam. Press every dart before cutting the next piece.*



The Spring 2026 silhouettes reward careful preparation.

First Stitch Checklist

-  1. Take your High Bust measurement and select your size.
-  2. Calculate your FBA requirement.
-  3. Buy 1.5 yards of broadcloth and cut your muslin.

Download the free Vintage Pattern Fit Guide 2026 for printable references and FBA templates. Ensure your machine is re-threaded and tension-tested. Begin.