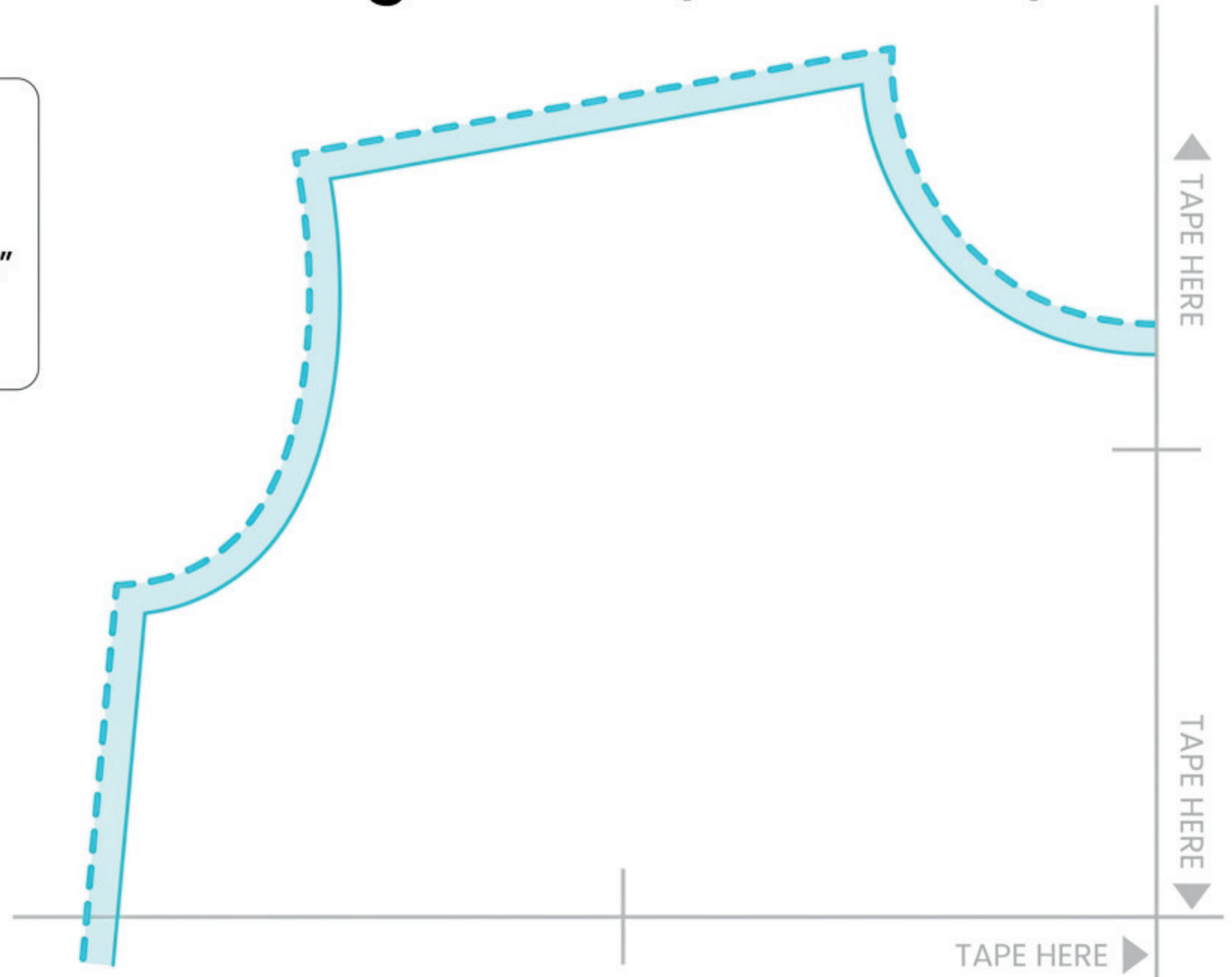


# Pillowcase Dress Drafting Guide (Part 1 of 4)

## Seam Allowance Included

All specified dimensions and drafting lines already include a 1/2" seam allowance for assembly. Cut directly on the dashed line.



## Armhole J-Curve Drafting

→ TAPE HERE

→ TAPE HERE

↑ TAPE HERE

↑ TAPE HERE

IN" measurements are marked to define start and end points before cutting.

### Use a CD for a Smooth Curve:

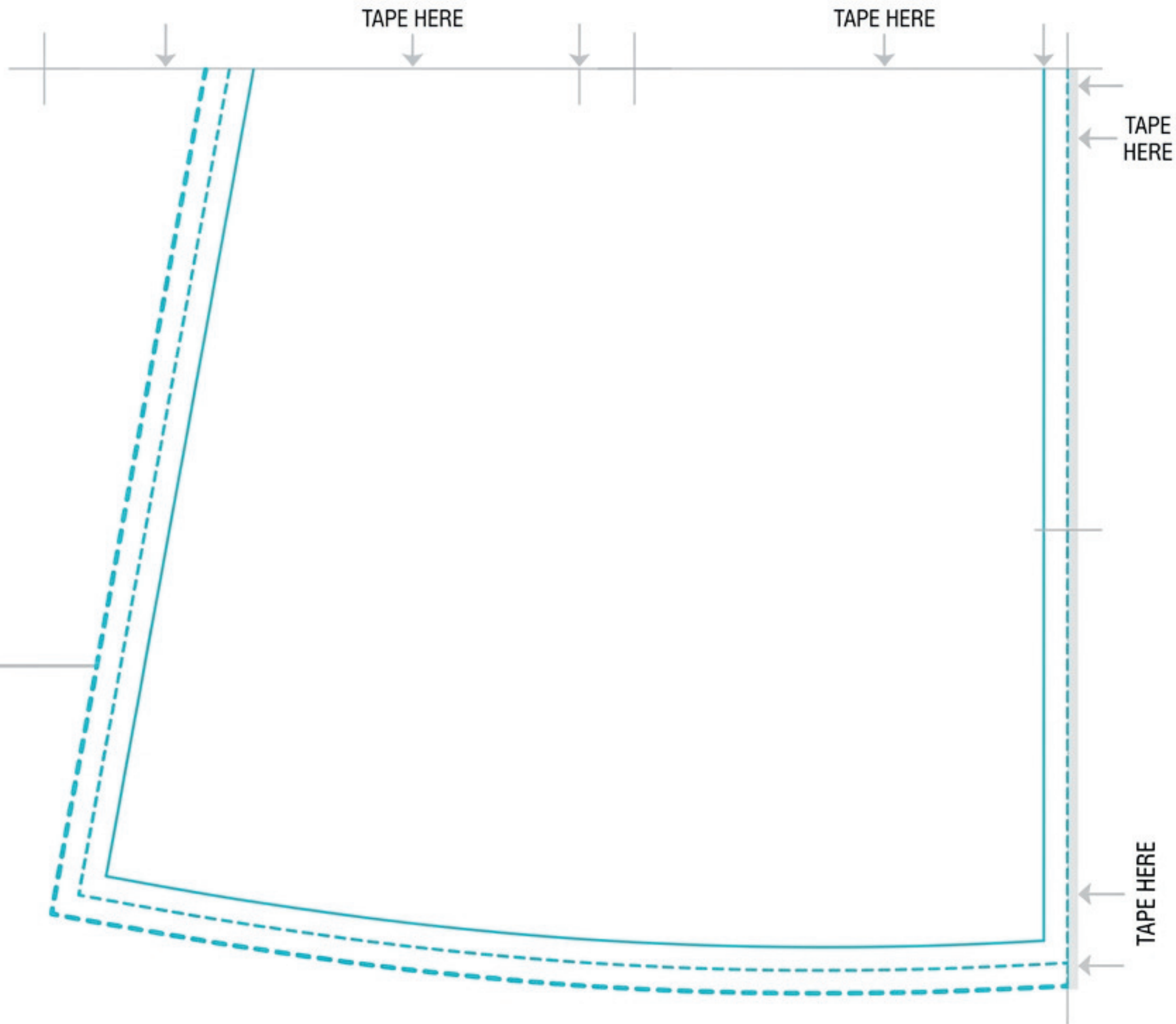
Align the edge of a standard CD or similar circular object to create a perfect, consistent "J" shape.

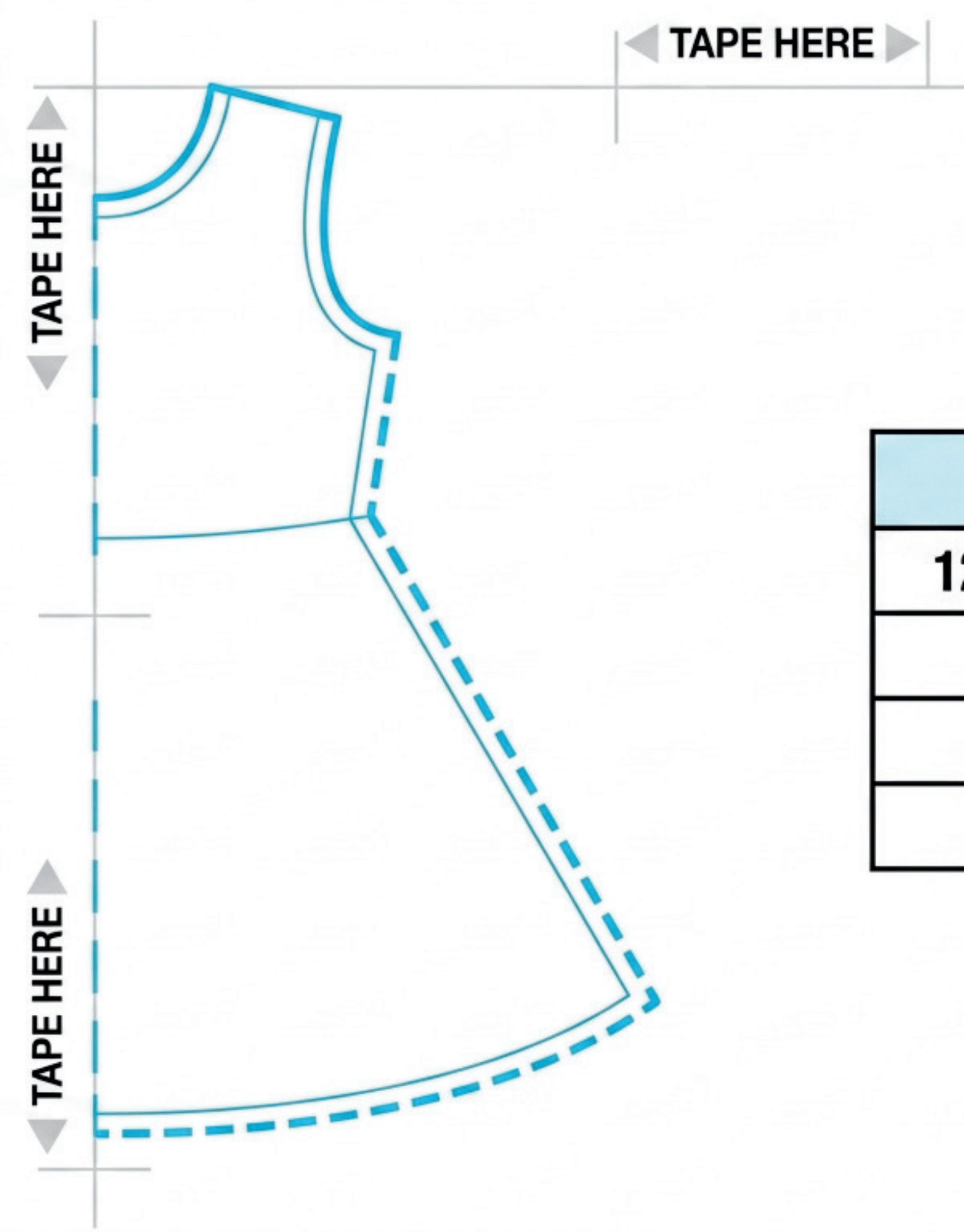
## 4-Sheet Tiling Grid Setup

Ensure printed A4 edges overlap so the pattern lines connect seamlessly.

Total Constructed Width: ~24.8"

Total Constructed Height: ~23.3"





## Size Chart for Cut Panels

| Size      | Length (Top to Bottom) | Width (Flat) |
|-----------|------------------------|--------------|
| 12 Months | 22.7"                  | 11.2"        |
| 2T        | 25.4"                  | 10"          |
| 3T/4T     | 27.8"                  | 16.2"        |
| 5/6       | 30.4"                  | 13"          |